



Outdoors, you can find lots of things that you can use for stamping. Leaves are a good example.

# LANDSCAPES

with leaves

**MATERIAL:** Different shaped leaves, paints and paintbrushes, a plate and some old newspapers.

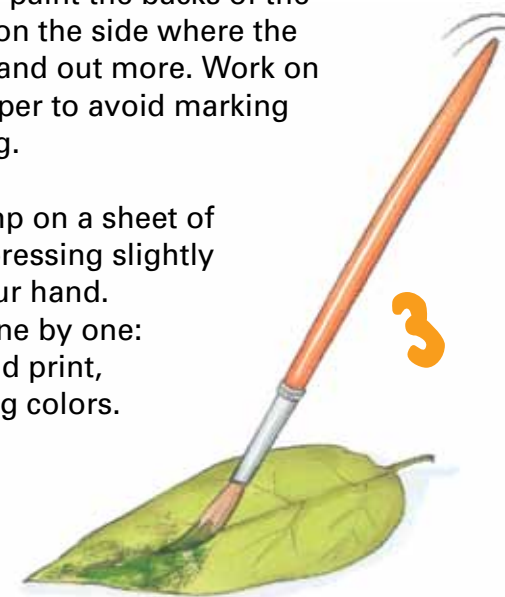
**1** Gather leaves of different shapes and sizes. Clean them a bit if they are dirty, being careful not to break them.



**2** Prepare a plate with different colored paints. Think about the colors of the trees in the fall: Greens, yellows, oranges, browns and reds...

**3** Now paint the backs of the leaves, on the side where the veins stand out more. Work on newspaper to avoid marking anything.

**4** Stamp on a sheet of paper, pressing slightly with your hand. Do so one by one: Paint and print, changing colors.



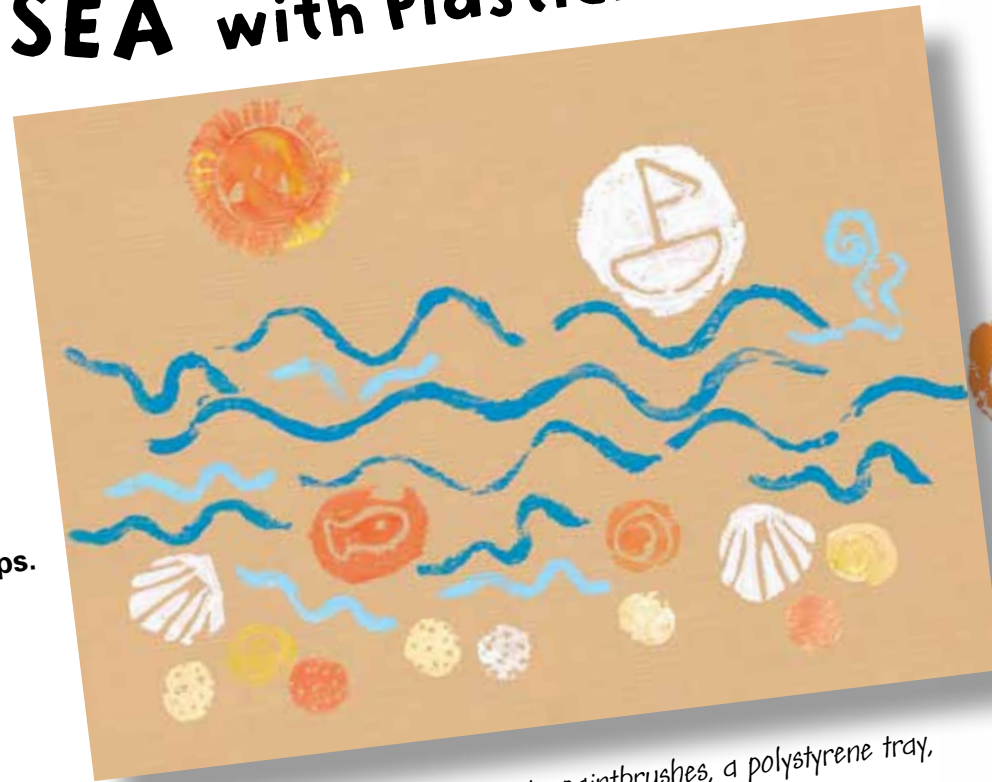
If you place them beside one another, they will look like a forest in the fall. But you can also do other things... What can you think of?



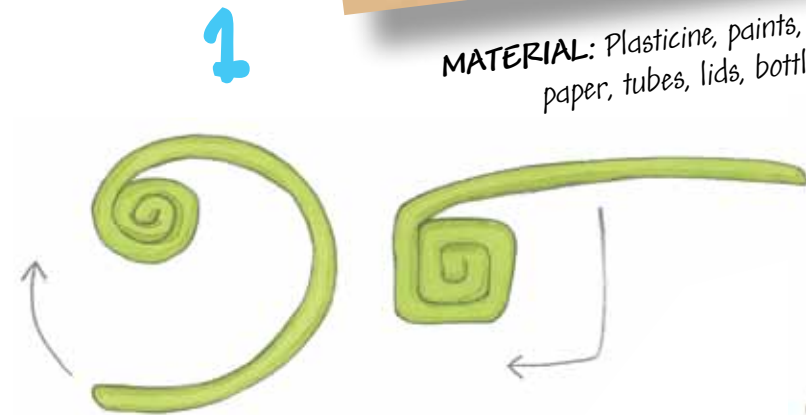


# THE SEA with Plasticine

By using two basic Plasticine modeling techniques (sausages and balls), you can make lots of printing stamps.



**MATERIAL:** Plasticine, paints, paintbrushes, a polystyrene tray, paper, tubes, lids, bottle tops and other shapes.

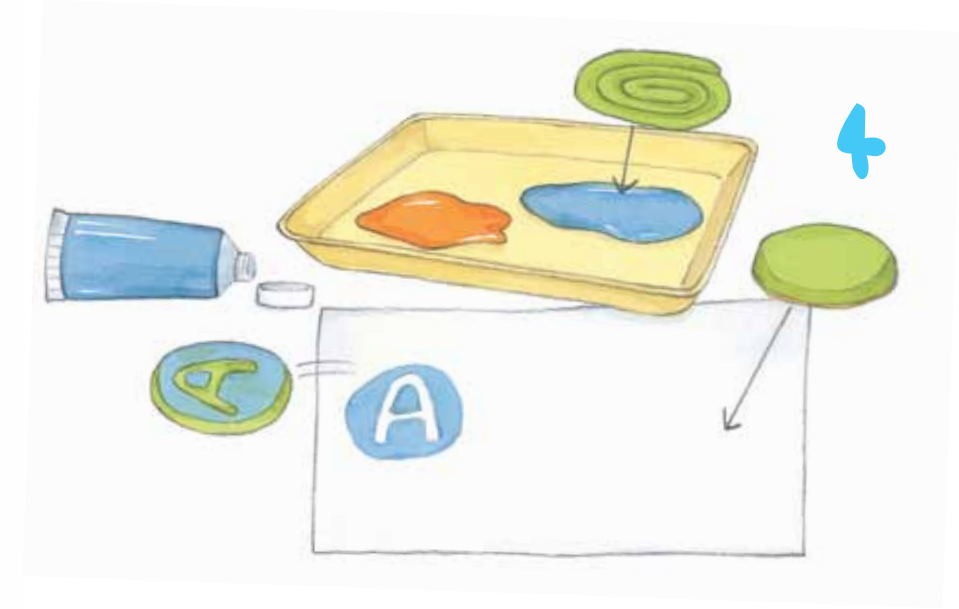
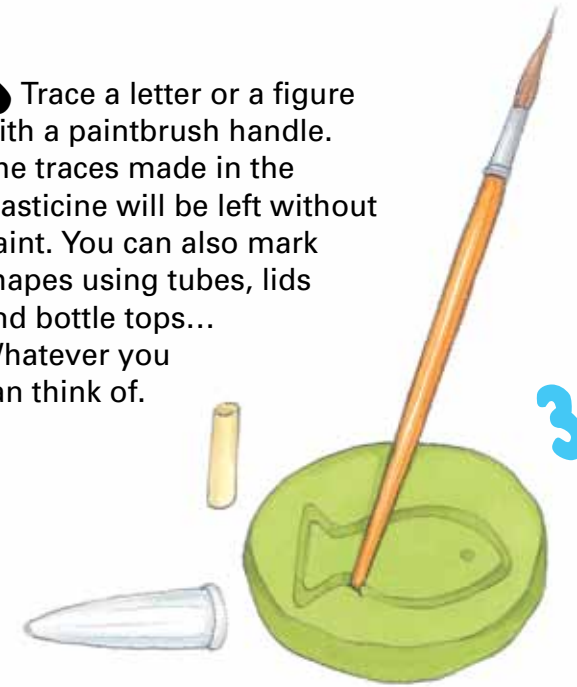


**1** Shape a long uniform sausage with Plasticine. Roll it from the inside out into a spiral. You can make it round or also create corners to end up with a square, for example. Then you will have a shape to stamp with.



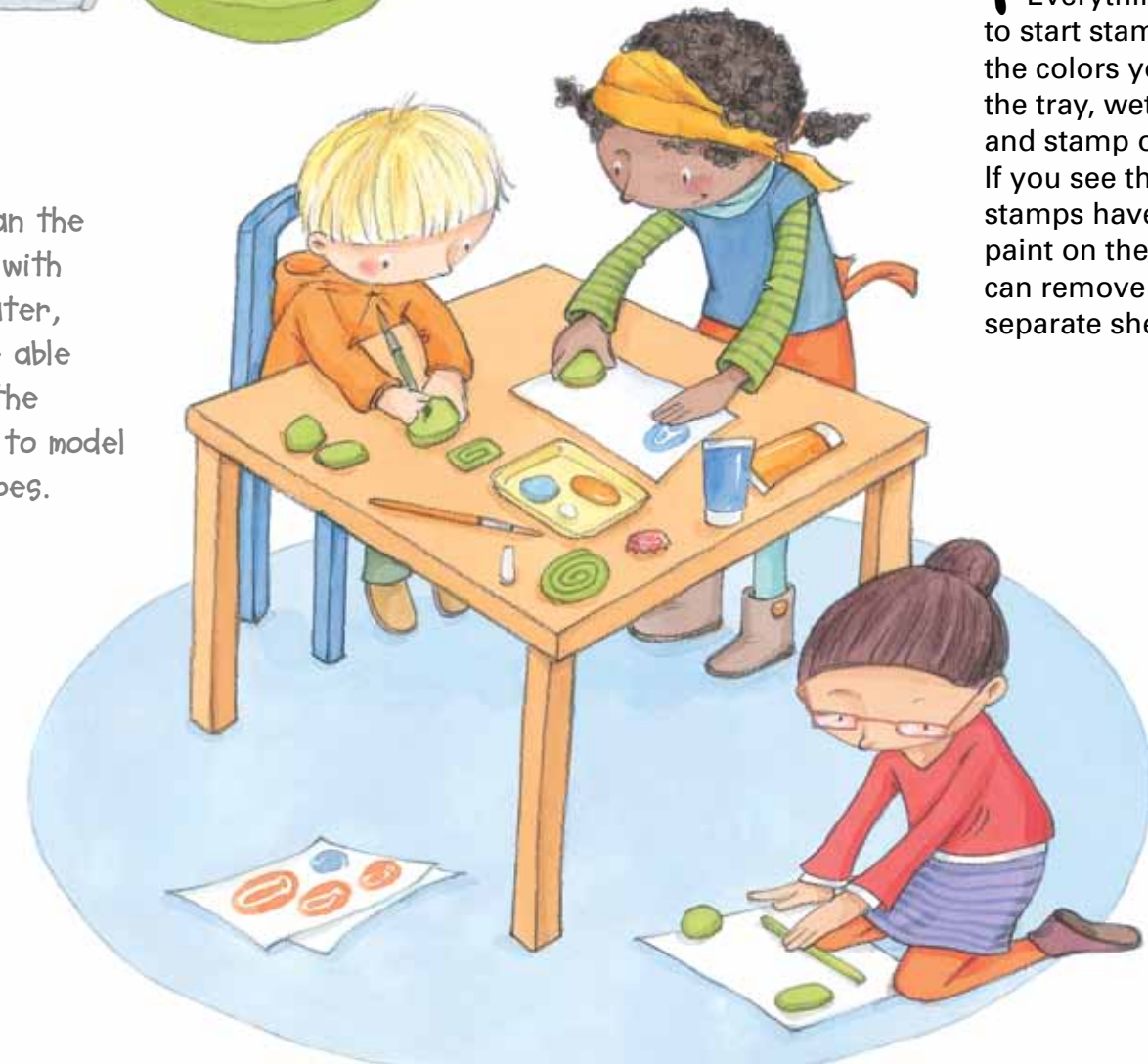
**2** Now make a Plasticine ball and flatten it with the palm of your hand until you make it flat on both faces.

**3** Trace a letter or a figure with a paintbrush handle. The traces made in the Plasticine will be left without paint. You can also mark shapes using tubes, lids and bottle tops... Whatever you can think of.



**4** Everything is ready to start stamping! Pour the colors you want into the tray, wet the shapes and stamp on the paper. If you see that the stamps have too much paint on them, you can remove some on a separate sheet of paper.

If you clean the paint well with a little water, you will be able to reuse the Plasticine to model other shapes.





# FLOWERS with cardboard tubes

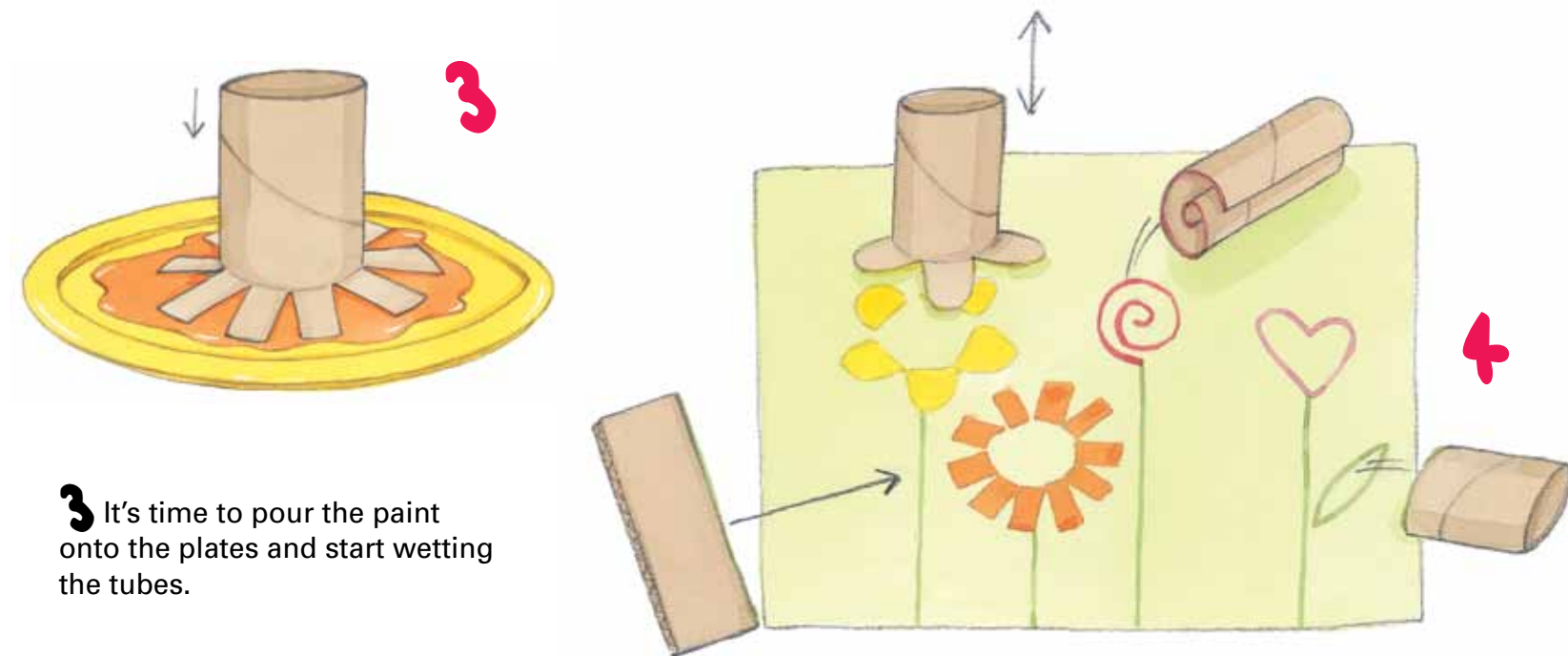
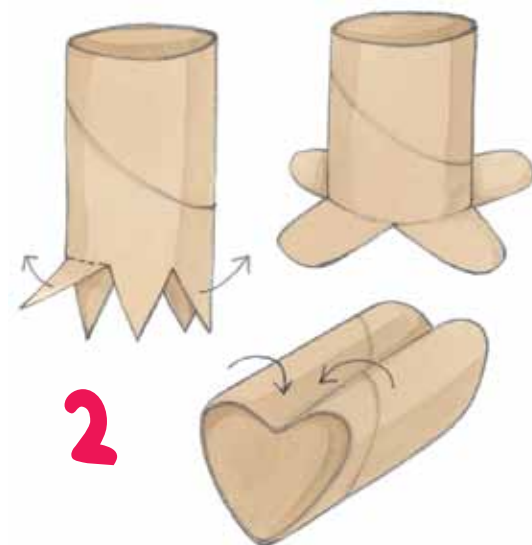
You must have different sized cardboard tubes at home. Keep them and experiment combining them with this fun exercise we suggest.

**MATERIAL:** Toilet paper tubes or similar, cardboard, scissors, plates, paints and paper or card.



**1** Cut the tube into different shapes at one end: Triangles, round shapes or whatever you can think of.

**2** Fold the shapes that you've cut outwards, opening the tube wide like a flower. You can also make shapes by folding the tube without cutting it, like a heart or a leaf... Try it out!



**3** It's time to pour the paint onto the plates and start wetting the tubes.

**4** You can use the shapes you have prepared to stamp different types of flowers, for example. If you cut a tube from top to bottom, you can make a spiral! And you can make stalks with the edge of a piece of cardboard.



Try making a mural for your bedroom. You can celebrate the coming of spring!